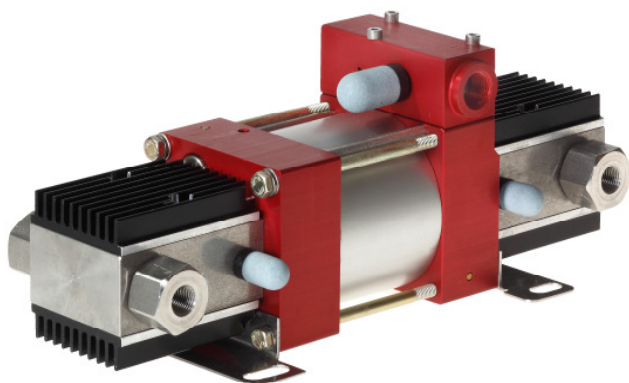


Technical Data Sheet	<b>ROB 32 D</b>	<u>R</u> ebreather <u>O</u> xygen <u>B</u> ooster
----------------------	-----------------	---



**Technical Data:**

Air drive pressure:	1-10 bar / 14,5—145 psi
Calculated Outlet Pressure at an air drive of 10 bar/145 psi	300 bar/ 4,350 psi
Pressure ratio:	1:32
Displacement volume/double stroke	11,6 cm <sup>3</sup> / 0.7 cu.inch
<b>Connections</b>	
Inlet:	Standard: Side inlet 1/4 BSP
Outlet:	1/4 BSP
Air drive	3/8 BSP
Maximum operating temperature	60 °C
Net weight	approx. 5,4 kg
Inlet Pressure	50-300 bar / 725-4,350 psi
Average Flow*	280 NL/min

**ROB 32 D**  
Double acting, single air drive head and distance piece

Pressure and flow performances, please see enclosed graph.  
\* The flow is depending on air drive and inlet pressure

<b>Wetted materials of construction:</b>		
	Seal package:	Filled Teflon (PTFE) Fluorcarbon (V)
	Pump Body:	1.4404
	Piston:	1.4112
	Fittings:	1.4571
<b>Approximate Dimensions:</b>		
	Height:	286 mm
	Depth:	121 mm
	Width:	110 mm
	Side inlet	Standard
<b>Available Accessories</b>		
Air control units type C1 with filter pressure regulator, control pressure gauge and shut off valve:	<b>ROB 32 D with C1</b>	
To protect the booster against excessive outlet pressures or to limit the outlet pressure, a safety valve can be fitted to the air control unit in the air drive line:	<b>ROB 32 D with C1/SV air</b> (The required outlet pressure has to be indicated.)	

**Please consult factory for more information.**

All technical and dimensional information subject to change. All General Terms and Conditions of sale, including limitations of our liability, apply to all products and services sold.

